

OpalisRendezVous 1.70

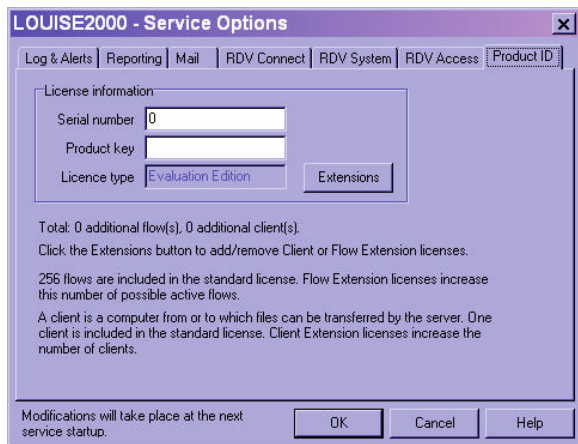
License Structure

OpalisRendezVous has a client/server architecture. It uses push and pull technology to replicate files and data. OpalisRendezVous runs on both an NT/2000 Server and an NT/2000 Workstation.

Server

OpalisRendezVous server licenses are installed on the computer that is triggering the file distribution or replication tasks. The Server License runs as a service on Windows NT/2000.

Licenses can be entered during installation or through the user interface by going to Options | Service | Product ID and entering the serial number and product key.



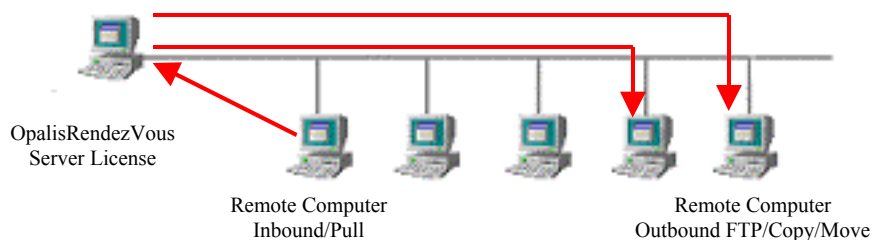
An OpalisRendezVous Server License includes 1 Client License. This means each server license can push or pull files from one computer.

An OpalisRendezVous Server License supports a maximum of 256 flows. Flows are the number of configurations that are set-up within the product.

Client

OpalisRendezVous client license open 'distribution privileges' to remote computers. A Client License is required for each computer where files are transferred. This is a 'paper license' that is entered during installation or through the user interface as shown above. *No software is required on the 'client' or remote computer.*

A Client License is required when you want to copy/move files to more than 1 remote computer



In this case 2 client licenses are required as the server licenses provides 1 client

A Client License is only required for Copy and FTP flows. Flows using RDV protocol and Database flows do not require a Client License. Please refer to the System Requirements section for information on using the RDV protocol.

If no serial number is entered the product will run in evaluation mode for 30-days.